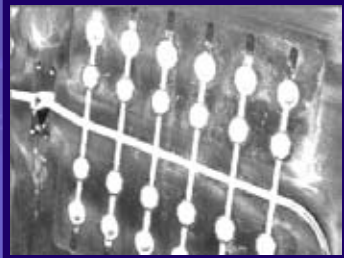


Sentinel™ Mold Protection

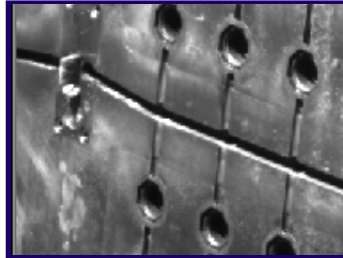
A Comprehensive Mold Protection and Inspection Solution that Detects Process Problems and Stops Mold Closure before Expensive Crashes Occur!



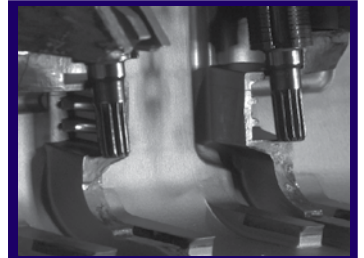
Flow Complete



Parts Ejected



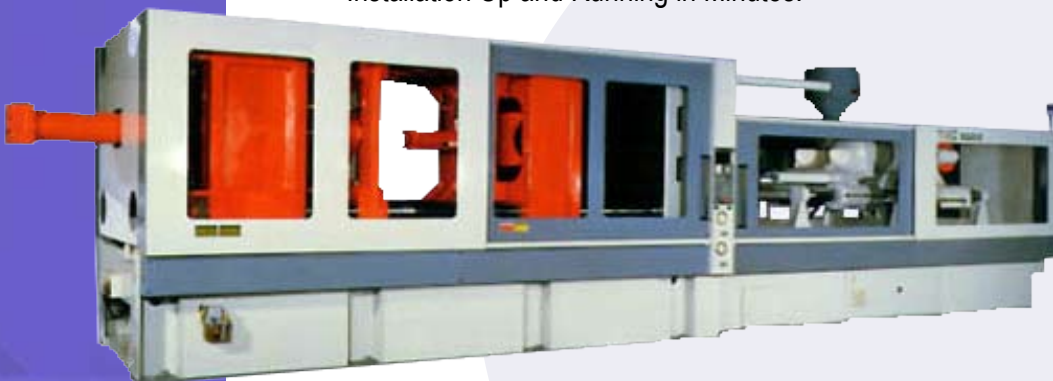
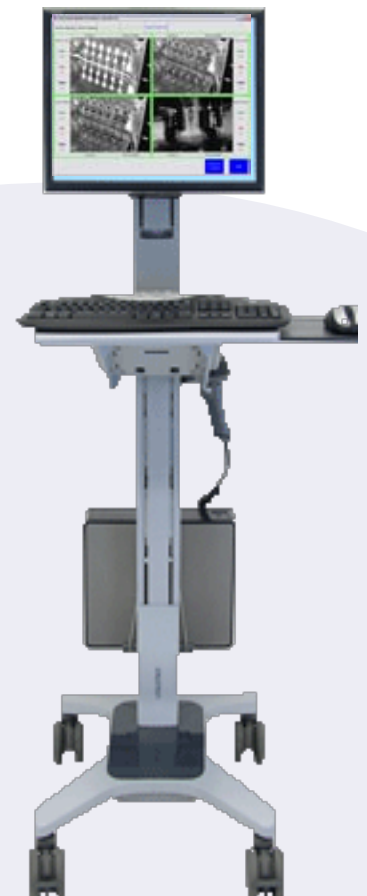
Pins Retracted



Insert Position

Protect Your Tooling Every Step of the Way!

- ✓ Smart Camera Technology - No PC Required
- ✓ Powerful, User-Ready, Step By Step Software
- ✓ Plug & Play Support for up to Four Cameras
- ✓ Configurable Tools for Protection and Inspection
- ✓ Universal I/O Communicates with All Press Manufacturers
- ✓ Touchscreen-Friendly Software Design
- ✓ Optional Factory-Direct Application Engineers to Get Your Installation Up and Running in Minutes!



"Sentinel Increases our Machine Uptime and Saves us Hundreds of Thousands of Dollars in Damaged Tooling!"



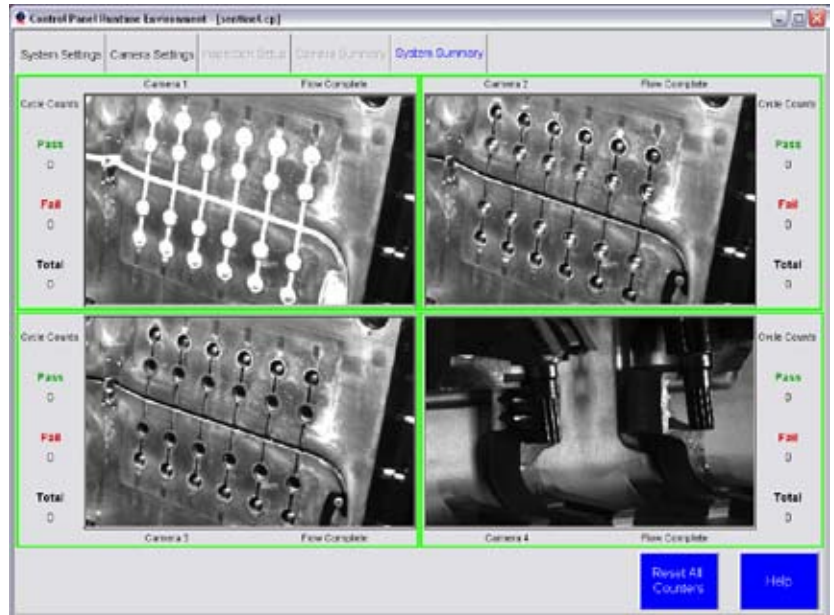
Sentinel™ Mold Protection

Powerful Software Guides You Through the Setup Process

Step 1 : Enable Cameras, Inspections and I/O



Step 4 : Summary Screen Shows Thumbnail View and Results



Step 2 : Live Imaging Allows for Image Optimization



Step 3 : Configure Locate and Inspection Tools



Sentinel™ is powered by PPT VISION's IMPACT A20 Intelligent Camera



- 752 x 480 Pixel Resolution (Higher Resolution Cameras Available)
- Various Lens Options Available
- Various Illumination Options Available
- Various Lens Filters and Lens Protector Options Available
- Various Camera & Illumination Enclosures Available
- Permanent or Magnetized Mounts Available